



FORMATION EVALUATION LOG



WELL : BASKER-5

FROM (m): 2150 TO (m): 3335 SCALE: 1/ 500

| | | | |
|--------------------------|--------------------------------|-----------------------------------|-------------------------------|
| Country : AUSTRALIA | Latitude : 38°17'59.31"S | 17 1/2" Hole to (mMDRT) : 1012m | Spud Date : 26-02-2006 |
| Basin : GIPPSLAND | Longitude : 148°42'23.80"E | 12 1/4" Hole to (mMDRT) : xxxm | Total Depth Date : xx-xx-2006 |
| Field : BASKER | UTM Co-ord X (m E) : 650106.2 | 8 1/2" Hole to (mMDRT) : 3357m | Total Depth (mRT) : 3357m |
| Permit : VIC/L26 | UTM Co-ord Y (m N) : 5761989.6 | 13 3/8" Shoe at (mMDRT) : 1001.3m | T.V.D. (mSS MSL) : 3072m |
| Well Type : DEVELOPMENT | RT-LAT (m) : 21.5 | 9 5/8" Shoe at (mMDRT) : xxx.xm | Status : |
| Rig Name : OCEAN PATRIOT | RT-Seabed (m) : 175.1 | 7" Shoe at (mMDRT) : xxxm | |

ABBREVIATIONS

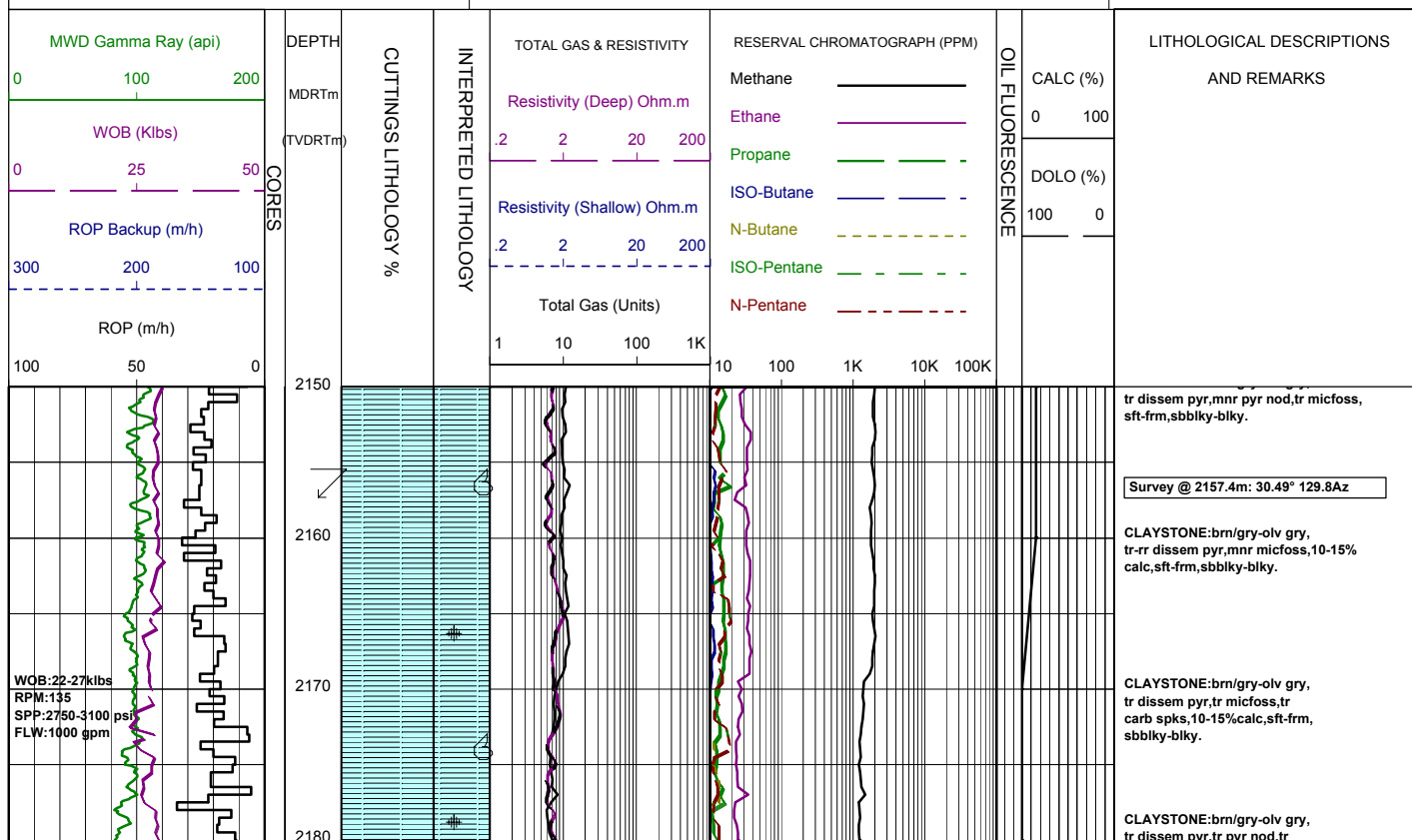
| | |
|-----------------------|----------------------|
| MW MUD WEIGHT | NB NEW BIT |
| FV FUNNEL VISCOSITY | RR RERUN BIT |
| PV PLASTIC VISCOSITY | CB CORE BIT |
| YP YIELD POINT | WOB WEIGHT ON BIT |
| FC FILTER CAKE | RPM REVS PER MINUTE |
| SOL SOLIDS | FLC FLOW CHECK |
| WL FILTRATE | CR CIRCULATE RETURNS |
| SD SAND - % | PR POOR RETURNS |
| S SALINITY - PPM | NR NO RETURNS |
| RM MUD RESISTIVITY | BG BACKGROUND GAS |
| RMF MUD FILTRATE | TG TRIP GAS |
| C CARBIDE TEST | STG SHORT TRIP GAS |
| LAT LOGGED AFTER TRIP | CG CONNECTION GAS |
| DS DEVIATION SURVEY | SG SWAB GAS |
| | SVG SURVEY GAS |

LITHOLOGY LEGEND

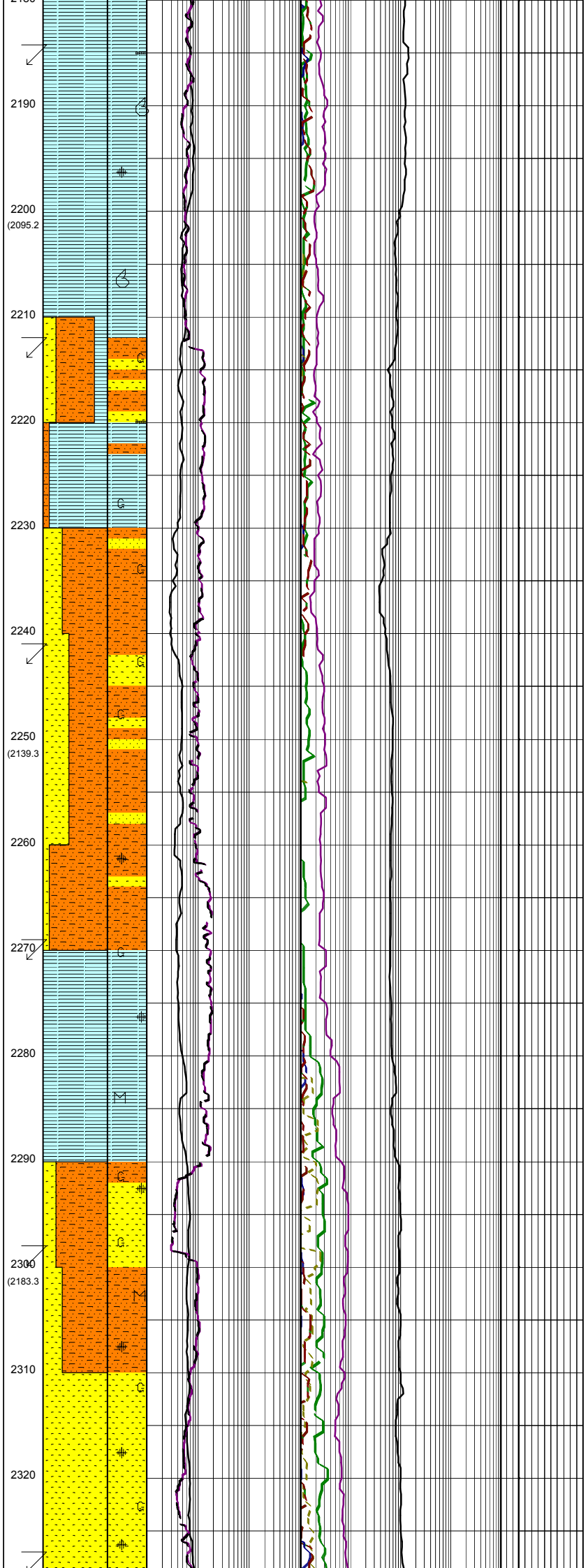
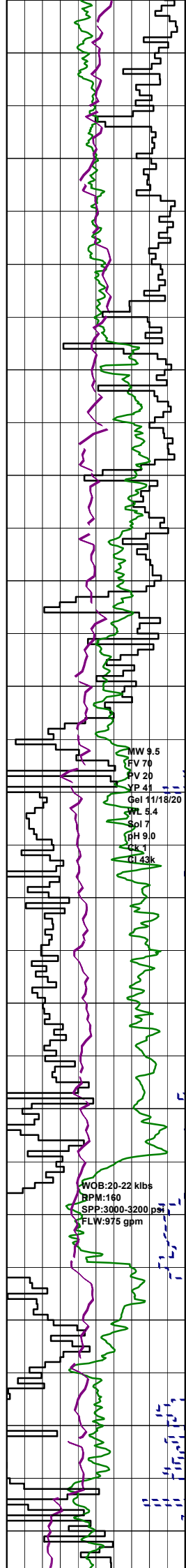
| | | | | | |
|--|-----------------|--|-----------------|--|----------------|
| | Claystone | | Limestone | | Brachiopoda |
| | Siltstone | | Dolomite | | Cement |
| | ar. Silt ar | | Coal | | Sponges |
| | Fine SST | | Gypsum | | Glauconite |
| | Medium SST | | Lithic Fragment | | Pyrite |
| | Coarse SST | | Foraminifera | | Iron Minerals |
| | Marl | | Fossils | | Mica |
| | Clay, Limestone | | Bryozoa | | Carb Fragments |

ENGINEERING LEGEND

| | | | |
|--|------------------|--|----------|
| | Shoe | | FIT |
| | Mud loss | | Mud gain |
| | Deviation survey | | |
| | DST | | |
| | Test | | |
| | Sidewall Core | | |
| | Core | | |
| | RFT | | |



WOB: 22-27 klbs
RPM: 135
SPP: 2750-3100 psi
FLW: 1000 gpm



micfoss,mnr carb spks,tr calc, sft-frm,sbbiky-sbfiss.

Survey @ 2186.1m: 29.68° 128.9Az

CLAYSTONE:brn/gry-olv gry, tr disse pyr,tr carb lams, mnr carb spks,tr calc,sft-frm, sbbiky-sbfiss.

CLAYSTONE:brn/gry-olv gry, tr disse pyr,tr carb spks, tr calc,tr micfoss,sft-frm, sbbiky-blky.

CLAYSTONE:brn/gry-olv gry, tr disse pyr,tr calc,tr micfoss,sft-frm,sbbiky-sbfiss tr blky.

Survey @ 2214.3m: 27.97° 129.8Az

SANDSTONE:clr-lt yel,crs-f, tr v crs,pr srt,sbrnd-sbang,tr ang, pr inf por,no fluor.

ARGILLACEOUS SILTSTONE: orgn brn-yel brn,tr calc,tr glauc, sft-frm,sbbiky-blky.

SILTY CLAYSTONE:orgn brn-yel brn,tr calc,tr glauc,tr carb spks,sft-v sft,occ disp,sbbiky-blky,occ amor.

ARGILLACEOUS SILTSTONE: grn/brn-gry/brn,com glauc,v sft-frm, occ disp,blky-sbbiky,occ amor.

Survey @ 2242.7m: 27.61° 129.6Az

SANDSTONE:clr-trnsl,med-vf, pr srt,sbang-sbrnd,com glauc,lse, pr inf por,no fluor.

ARGILLACEOUS SILTSTONE: grn/brn-gry/brn,com glauc,sft-disp, blky-amor.

ARGILLACEOUS SILTSTONE: grn/brn-gry/brn,com glauc,tr-rr disse pyr,sft-disp,blky-amor.

Survey @ 2271.4m: 28.48° 130.6Az

SILTY CLAYSTONE:grn/brn-gry/brn, com glauc,tr-rr disse pyr, sft-disp,blky-amor.

SILTY CLAYSTONE:grn/brn-gry/brn, com glauc,tr-rr disse pyr,tr micmic, sft-disp,blky-amor.

ARGILLACEOUS SILTSTONE: grn/brn-gry/brn,com glauc,tr-rr disse pyr,tr micmic,sft-disp,blky-amor.

Survey @ 2300.1m: 28.83° 130.5Az

SANDSTONE:clr-trnsl,vf-med,tr crs pr srt,ang-sbang,tr glauc,tr disse pyr,tr micmic,lse,gd inf por, no fluor.

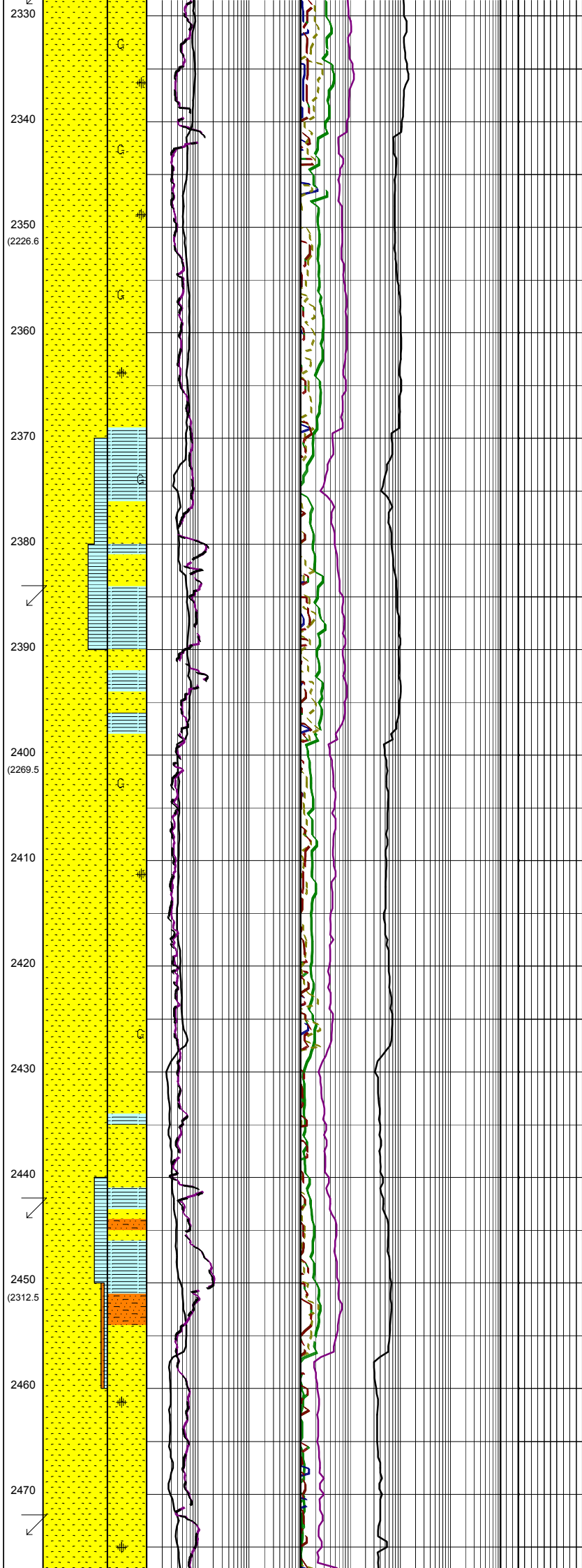
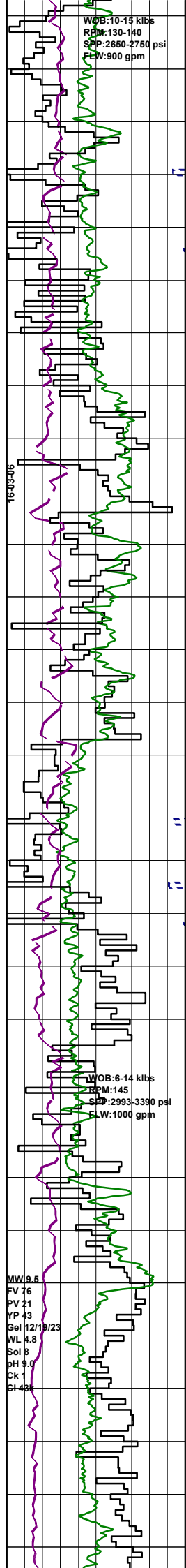
SANDSTONE:clr-trnsl,med-vf,tr crs pr srt,ang-sbang,occ brn/gry sity mtx, tr glauc,tr disse pyr,tr micmic,lse, gd inf por,no fluor.

SANDSTONE:clr-trnsl,med-vf,tr crs pr srt,ang-sbrnd,occ brn/gry sity mtx, tr glauc,tr disse pyr,lse,gd inf por, no fluor.

Survey @ 2328.7m: 30.10° 130.3Az

MW 9.5
 RV 70
 PV 20
 P 41
 Gel 11/18/20
 SWL 5.4
 SPl 7
 RH 9.0
 CI 43k

WOB:20-22 klbs
 RPM:160
 SPP:3000-3200 psi
 FLW:975 gpm



SANDSTONE: clr-trnsl, f-med, tr crs, tr vf, mod srt, ang-sbrnd, occ brn/gry sily mtx, tr glauc, tr dissem pyr, lse, gd inf por, no fluor.

Survey @ 2357.5m: 31.19° 129.7Az

SANDSTONE: clr-trnsl, f-med, occ crs, mod srt, sbang-sbrnd, sph-sbsph, sil & pyr cmt, pred cl mtx, occ calc mtx, tr kao mtx, tr-com glauc, lse, gd inf por, no fluor

CLAYSTONE: med gry, occ brn/gry, com glauc, v sft, amor, partly w/out.

Survey @ 2386.4m: 30.97° 129.6Az

SANDSTONE: clr-trnsl, tr med dk gry-dk gry, pred crs-v crs, occ f-med, mod wl srt, sbang-sbrnd, sph-sbsph, tr sil & pyr cmt, tr kao mtx, tr glauc, lse, gd inf por, no fluor.

SANDSTONE: clr-trnsl, f-med, occ crs, mod srt, sbang-sbrnd, sph-sbsph, tr sil & pyr cmt, tr kao mtx, tr glauc, lse, gd inf por, no fluor.

Survey @ 2444.3m: 30.32° 129.7Az

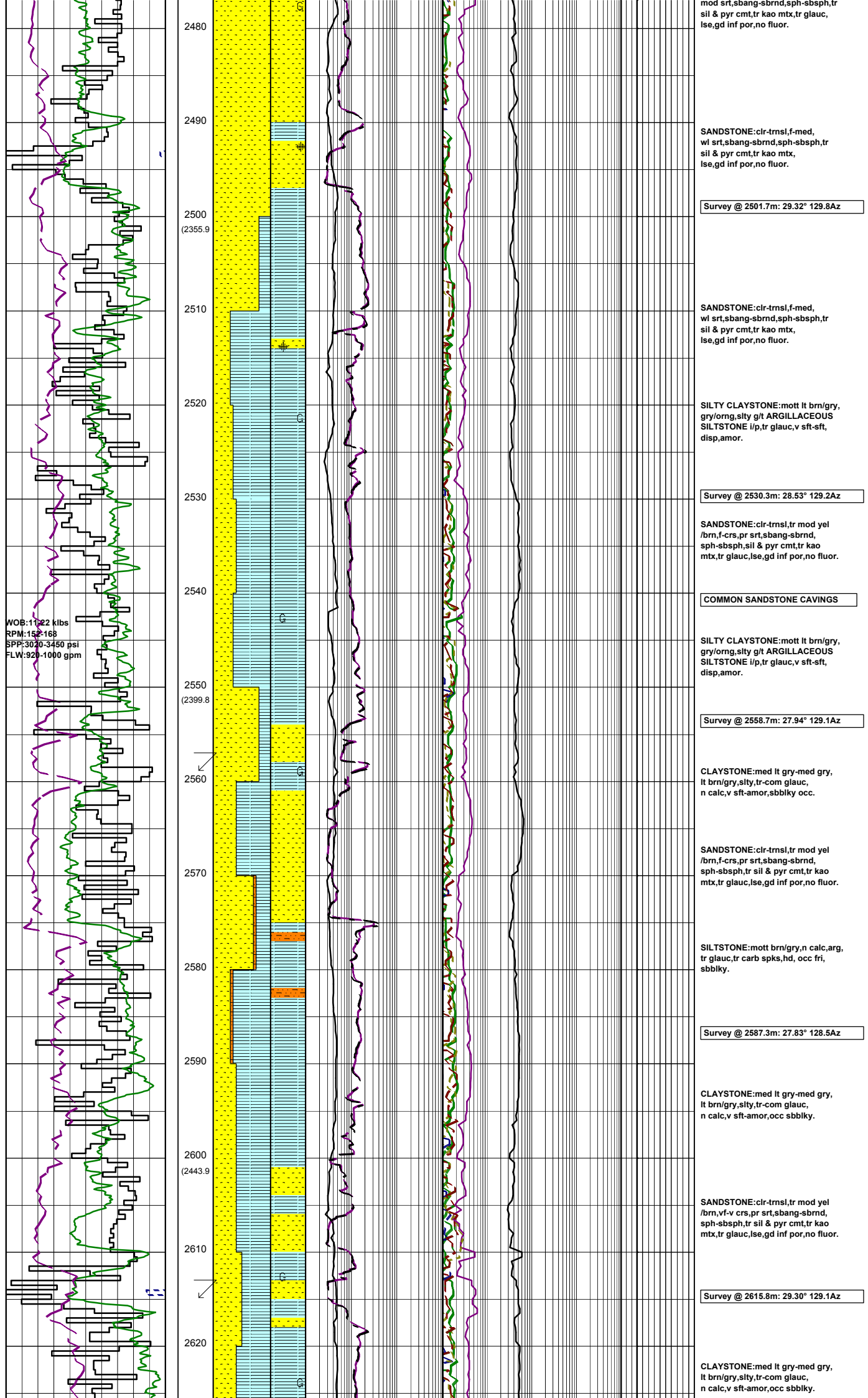
SILTSTONE: brn/gry, tr carb spks, pred fri, occ frm-hd, blk-y-sbbiky.

CLAYSTONE: med dk gry, tr pyr, frm-hd, sbbiky, occ sbfiss.

SANDSTONE: clr-trnsl, vf-crs, pr srt, sbang-sbrnd, sph-sbsph, tr sil & pyr cmt, tr kao mtx, tr chl, lse, gd inf por, no fluor.

Survey @ 2473.0m: 29.94° 129.8Az

SANDSTONE: clr-trnsl, vf-f,



SANDSTONE:clr-trmsl,f-med,
 wl srt,sbang-sbrnd,sph-sbsph,tr
 sil & pyr cmt,tr kao mtx,
 lse,gd inf por,no fluor.

Survey @ 2501.7m: 29.32° 129.8Az

SANDSTONE:clr-trmsl,f-med,
 wl srt,sbang-sbrnd,sph-sbsph,tr
 sil & pyr cmt,tr kao mtx,
 lse,gd inf por,no fluor.

SILTY CLAYSTONE:mott lt brn/gry,
 gry/org,slty g/t ARGILLACEOUS
 SILTSTONE i/p,tr glauc,v sft-sft,
 disp,amor.

Survey @ 2530.3m: 28.53° 129.2Az

SANDSTONE:clr-trmsl,tr mod yel
 /brn,f-crs,pr srt,sbang-sbrnd,
 sph-sbsph,sil & pyr cmt,tr kao
 mtx,tr glauc,lse,gd inf por,no fluor.

COMMON SANDSTONE CAVINGS

SILTY CLAYSTONE:mott lt brn/gry,
 gry/org,slty g/t ARGILLACEOUS
 SILTSTONE i/p,tr glauc,v sft-sft,
 disp,amor.

Survey @ 2558.7m: 27.94° 129.1Az

CLAYSTONE:med lt gry-med gry,
 lt brn/gry,slty,tr-com glauc,
 n calc,v sft-amor,sbbkly occ.

SANDSTONE:clr-trmsl,tr mod yel
 /brn,f-crs,pr srt,sbang-sbrnd,
 sph-sbsph,tr sil & pyr cmt,tr kao
 mtx,tr glauc,lse,gd inf por,no fluor.

SILTSTONE:mott brn/gry,n calc,arg,
 tr glauc,tr carb spks,hd, occ fri,
 sbbkly.

Survey @ 2587.3m: 27.83° 128.5Az

CLAYSTONE:med lt gry-med gry,
 lt brn/gry,slty,tr-com glauc,
 n calc,v sft-amor,occ sbbkly.

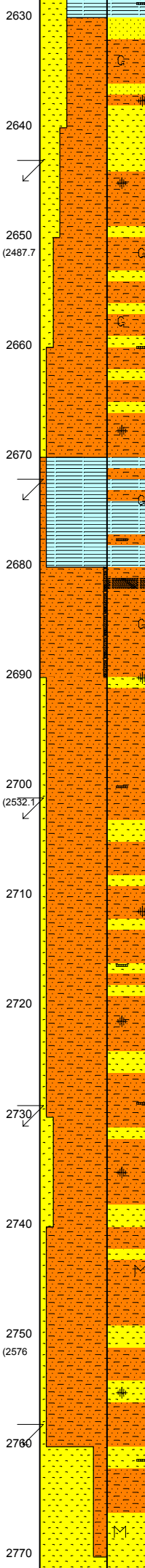
SANDSTONE:clr-trmsl,tr mod yel
 /brn,vf-v crs,pr srt,sbang-sbrnd,
 sph-sbsph,tr sil & pyr cmt,tr kao
 mtx,tr glauc,lse,gd inf por,no fluor.

Survey @ 2615.8m: 29.30° 129.1Az

CLAYSTONE:med lt gry-med gry,
 lt brn/gry,slty,tr-com glauc,
 n calc,v sft-amor,occ sbbkly.

WOB:20-24 kilbs
RPM:155
SPP:3100-3300 psi
FLW:960 gpm

WOB:20-28 kilbs
RPM:150
SPP:3040-3260 psi
FLW:918 gpm



SANDSTONE:clr-trmsl,f-crs,pr srt, sbang-sbrnd,tr-rr pyr nod,com glauc, tr carb mat,lse,pr inf por,no fluor.

Survey @ 2644.5m: 28.38° 129.1Az

ARGILLACEOUS SILTSTONE:med lt gry-med gry,com glauc, tr pyr nod & dissem,tr carb mat, disp frm,amor-sbbiky.

SANDSTONE:clr-trmsl, vf-crs,tr v crs,v pr srt,sbrnd-sbang, tr carb mat,tr glauc,tr pyr nod & dissem,lse,gd inf por,no fluor.

ARGILLACEOUS SILTSTONE:med lt gry-med gry,com glauc, tr pyr nod & dissem,tr carb mat, disp frm,amor-sbbiky.

Survey @ 2673.5m: 27.29° 128.4Az

SILTY CLAYSTONE:lt olv gry-lt gry,tr off wh,calc,kaol i/p, tr glauc,tr pyr nod & dissem,tr carb mat,disp-sft,amor-sbfiss.

ARGILLACEOUS SILTSTONE: lt olv gry-lt gry,tr-rr dk gry,tr off wh,mnr calc,kaol i/p,tr pyr dissem, tr glauc,sft-frm,tr disp,sbbiky-sbfiss, tr amor.

COAL:olv blk-gry/brn,dll-ea, slty,mod hd-frm,com brit,sbfiss-sbbiky,ang-unevn.

SANDSTONE:clr-trmsl,f-crs,tr v crs,pr srt,sbrnd-sbang,lse,gd inf por,no fluor.

Survey @ 2702.5m: 27.35° 128.8Az

ARGILLACEOUS SILTSTONE: lt olv gry-lt gry,tr-rr dk gry,tr off wh,mnr calc,kaol i/p,tr pyr nod,tr carb mat,sft-frm,tr disp,sbbiky-sbfiss,tr amor.

SANDSTONE:clr-trmsl,f-crs,tr v crs,pr srt,sbang-ang,lse,fr inf por,no fluor.

ARGILLACEOUS SILTSTONE: lt olv gry-lt gry,tr off wh, kaol i/p,tr pyr nod,tr carb mat, sft-frm,tr disp,sbbiky-blky, tr amor.

Survey @ 2731.3m: 28.69° 129.1Az

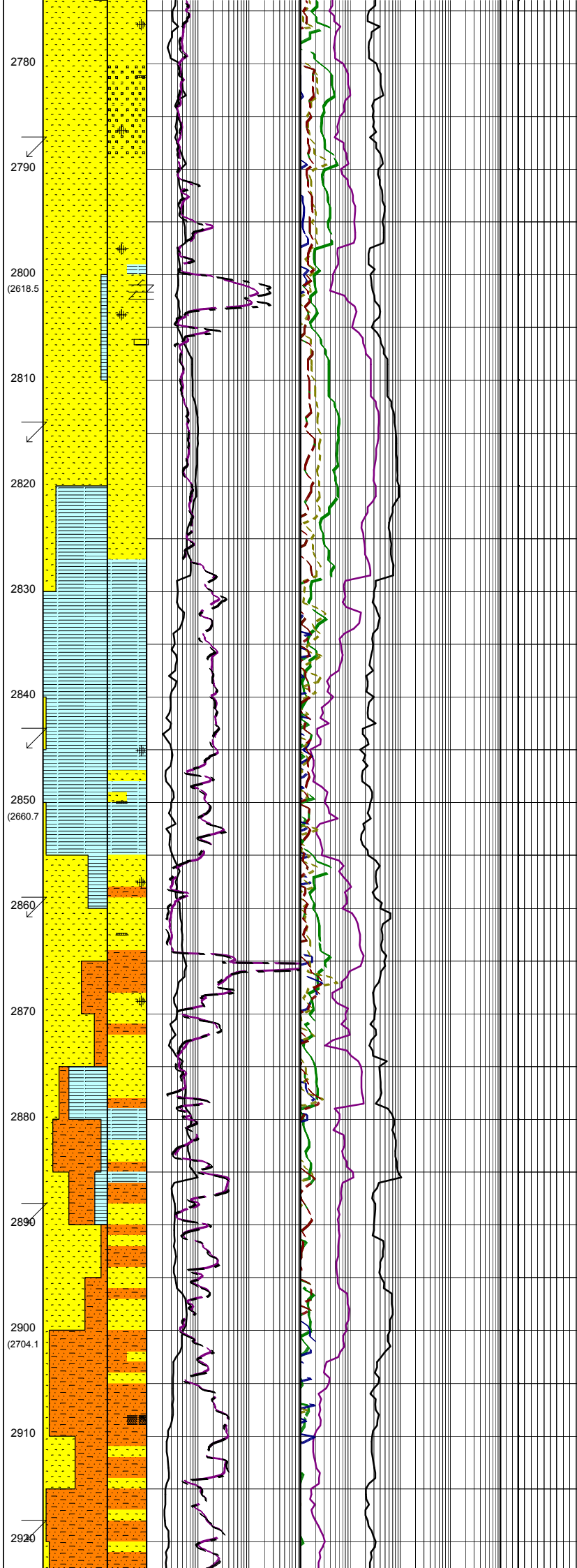
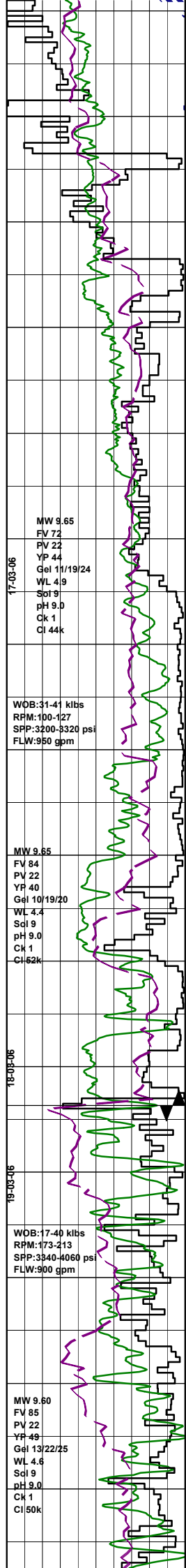
SANDSTONE:clr-trmsl,f-med,tr crs,pr srt,sbrnd-sbang,lse,gd inf por,no fluor.

ARGILLACEOUS SILTSTONE: lt olv gry-lt gry,tr off wh, kaol i/p,tr pyr nod,tr carb mat, tr mic,sft-frm,tr disp,blky-sbbiky, tr amor.

SANDSTONE:clr-trmsl,f-med,tr crs,tr vf,pr srt,sbrnd-sbang,lse, gd inf por,no fluor.

Survey @ 2759.7m: 30.71° 130.0Az

SANDSTONE:clr-trmsl,tr opq, vf-crs,tr v crs,v pr srt,sbang-sbrnd,calc,tr pyr nod,tr mic, tr carb mat,lse,gd inf por, no fluor.



SANDSTONE:clr-trmsl,tr opq,
vf-crs,com v crs,v pr srt,sbang-
sbrnd,tr pyr nod & cmt aggs i/p,
lse,tr frm aggs,gd inf por,no fluor.

Survey @ 2788.2m: 33.03° 129.3Az

SANDSTONE:clr-trmsl,tr opq,
crs-f,com v crs,v pr srt,rnd-sbang,
tr ang,tr qtz ovghs,tr pyr nod & cmt
aggs,lse,tr frm-mod hd,gd inf por,
no fluor.

SANDSTONE:clr-trmsl,tr opq,
f-crs,tr v crs,v pr srt,rnd-sbang,
tr ang,tr qtz ovghs,tr pyr nod & cmt
aggs,tr dolo cmt,lse,tr frm-mod hd,
gd inf por,no fluor.

Survey @ 2816.4m: 33.18° 128.2Az

CLAYSTONE 1:mott v lt-lt gry,med dk
gry,tr silt,tr calc,rr micfoss,tr carb
carb mat,amor-sbbkly,v sft-sft,
occ frm.

CLAYSTONE 2:dk gry,sl calc,frm,
bkly-spintry,homogen
Cavings:50mmx10mm in coarse sieve
sample.

Survey @ 2845.3m: 31.25° 128.1Az

CLAYSTONE:dk gry-lt gry,com off
wh,occ aren i/p,tr calc i/p,tr pyr
nod,tr carb mat,frm-sft,tr disp,
bkly-sbfiss,tr amor.

SANDSTONE:clr-trmsl,tr opq
f-crs,tr v crs,v pr srt,ang-rnd,
tr pyr nod,tr carb mat,tr sil lams,
tr qtz ovghs,lse,gd inf por,
no fluor.

ARGILLACEOUS SILTSTONE:
lt gry-dk gry,tr off wh,tr pyr nod,
tr carb mat,frm-sft,tr disp,bkly-
sbbkly,tr amor.

SANDSTONE:clr-trmsl,tr opq,
f-med,pr srt,sbang-sbrnd,tr rock
flour,tr pyr nod,tr carb mat,lse,fr
inf por,no fluor.

Rmf 2878m:0.08 ohm @ 75°F

Bit#: SMITH BVCP5
SIZE:311mm (12.25")
JETS:3x24, 1x16
IN: 2878m OUT:3191
RUN:313m HRS:25.8
COND:3-5-BT-G-E-1-WT-PR

Survey @ 2890.1m: 29.25° 127.8Az

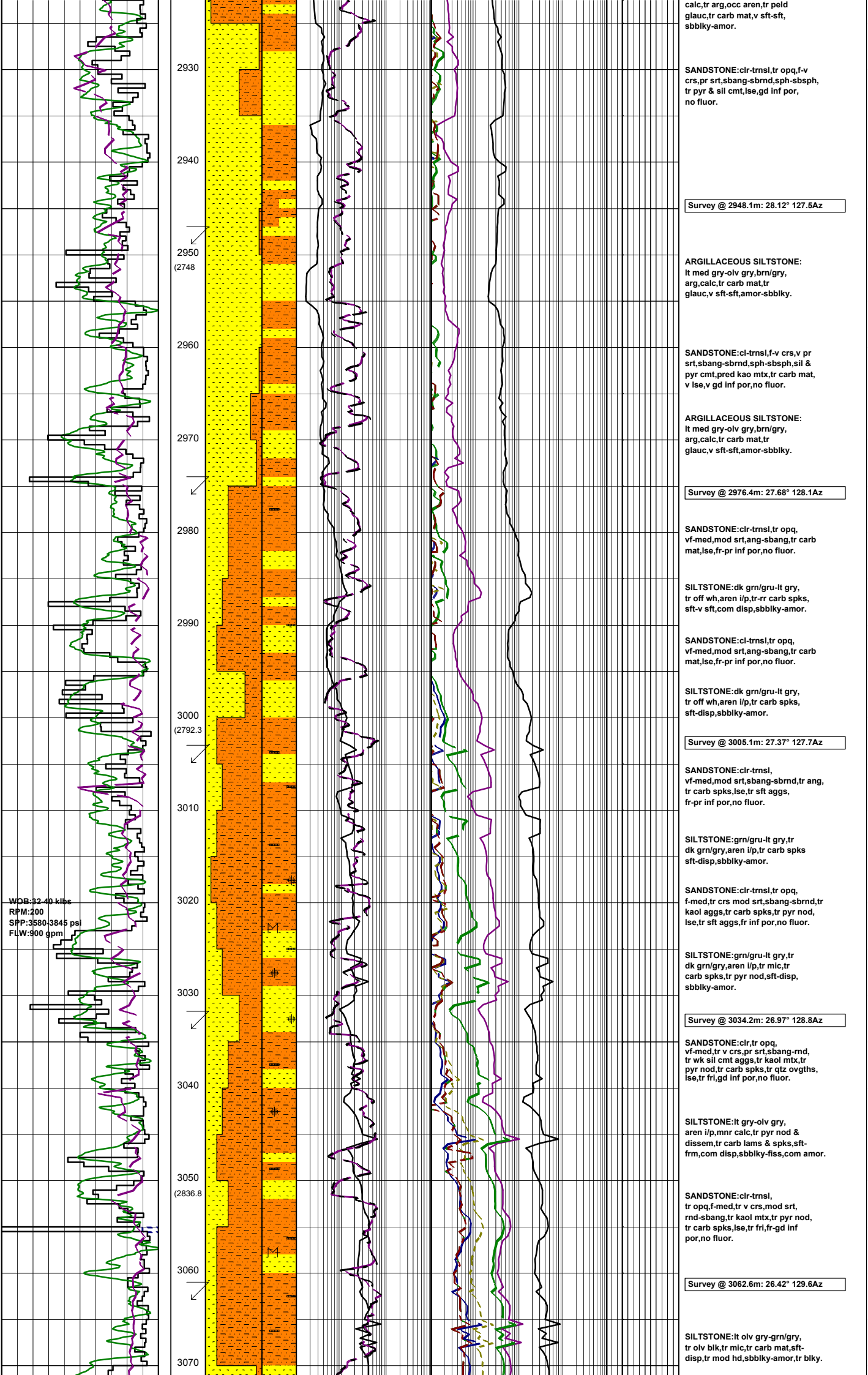
SILTSTONE:lt gry-lt brn/gry,
calc,tr arg,occ aren,tr peld
glauc,tr carb mat,v sft-sft,
sbbkly-amor.

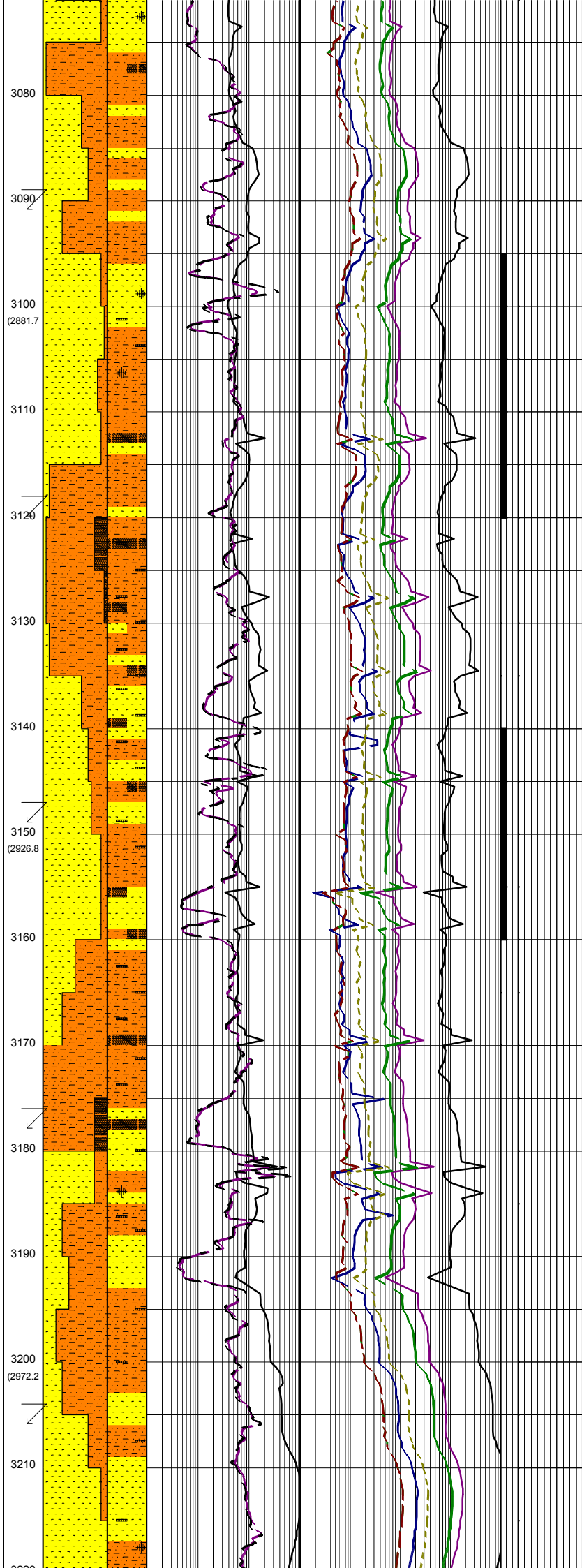
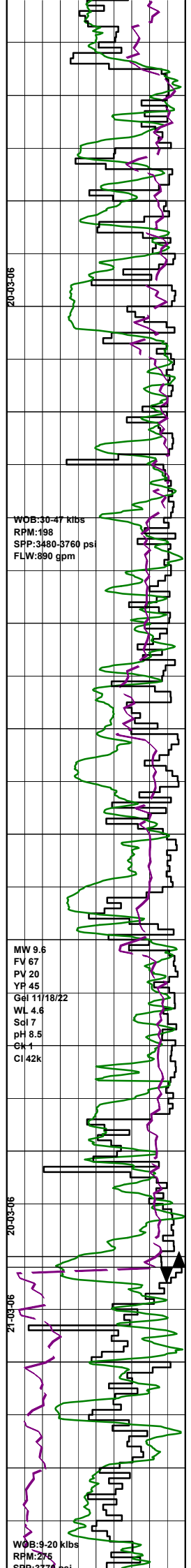
SANDSTONE:clr-trmsl,med-crs,
occ v crs,pr srt,sbang-
sbrnd,sph-sbph,tr pyr cmt,lse,
gd inf por,no fluor.

COAL:blk,dll,silty,pyr,frm-brit,
bkly-hckly.

Survey @ 2919.4m: 28.69° 128.8Az

SILTSTONE:lt gry-lt brn/gry,





SANDSTONE:clr-tmsl,
tr off wh,f-med,tr v crs,mod srt,
ang-sbang,tr kaol mt,x,tr pyr cmt &
nod,tr carb spks,lse,tr fri,fr-gd inf
gd inf por,no fluor.

Survey @ 3091.1m: 25.88° 130.1Az

SILTSTONE:brn/gry-brn/blk,
com carb mat,arg i/p,n calc,
v sft-sft,occ frm,sbbkly-amor.

SANDSTONE:clr-tmsl,vf-v crs,
v pr srt,sbang-sbrnd,occ ang,
sph-sbsph,sil & pyr cmt,tr carb
mat,rr mic,rr rd lith frags,pred
lse-occ f gr fri agg,v gd inf por,
fluor.

FLUOR:3095m-3120m;5-15%,dll
yel/grn,no cut,no c/c,no r/r.

Survey @ 3119.9m: 25.24° 129.7Az

COAL:blk,vit,v hd & brit,sbconch-
bkly.

SILTSTONE:lt brn/gry-brn/gry-
brn/blk,com crs carb mat,arg i/p,
v sft-sft,occ frm,sbbkly-amor.

SANDSTONE:clr-tmsl,f-v crs,v pr
srt,sbang-sbrnd,sil & pyr cmt,kaol
mtx,tr carb mat,rr mic,pred lse,v gd
inf por,no fluor.occ agg med lt gry-
med gry,clr,vf-f,wl srt,sbang-sbrnd,
sph,sil calc cmt,fri,fr inf por,no
fluor.

Rmf 3150m:0.07 ohm @ 75°F

Survey @ 3149.0m: 25.23° 131.9Az

SANDSTONE:clr-tmsl,f-v crs,v pr
srt,sbang-sbrnd,sil & pyr cmt,abdt
kao mt,x,tr carb mat,lse,occ sft &
fri aggs,fr inf por,fluor.

FLUOR:3140m-3160m;3-20%,dll
grn/yel,no cut,no c/c,no r/r.

SILTSTONE:brn/gry-brn/blk,tr arg,
com carb mat,v sft-sft,amor-sbbkly.

COAL:blk,vit,v hd & brit,sbconch-
bkly.

Survey @ 3177.4m: 24.66° 131.9Az

SANDSTONE:clr-tmsl,tr opq,
vf-med,mnr crs,pr srt,sbang-rnd,tr
kaol mt,x,lse,tr fri,fr-gd inf por,
no fluor.

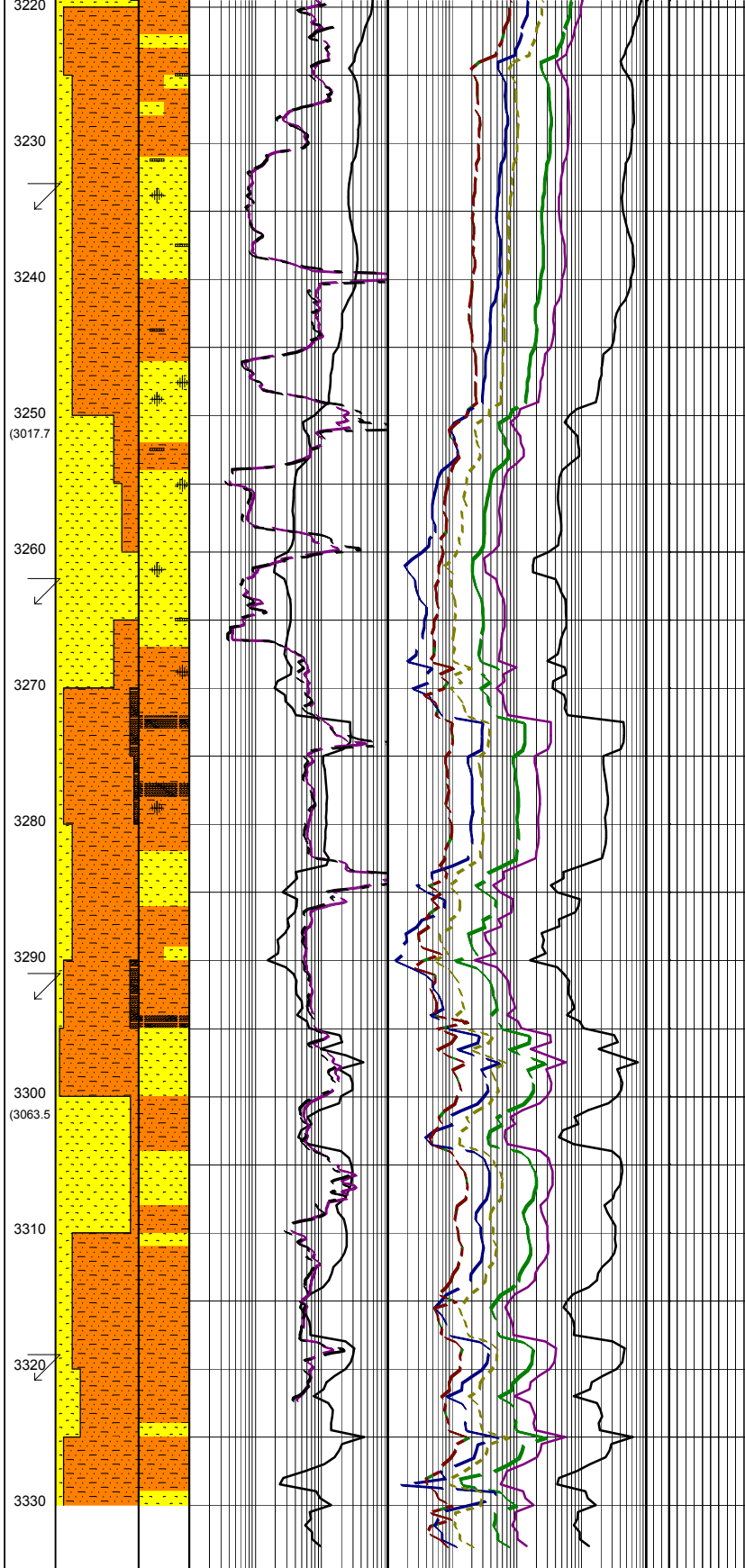
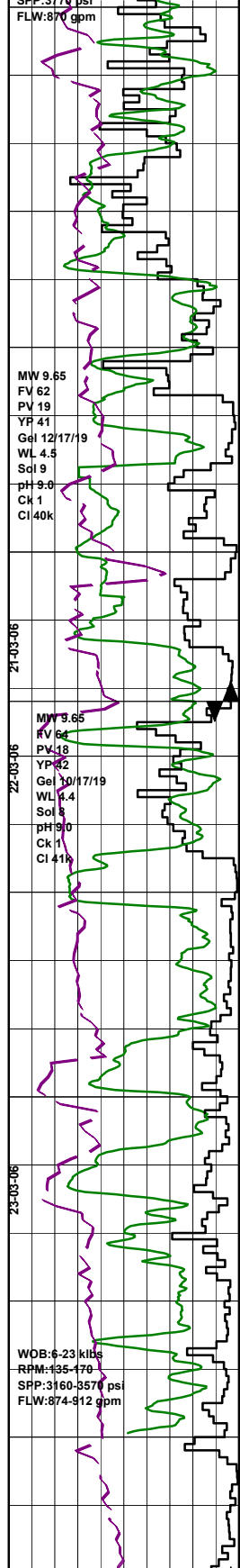
SILTSTONE:lt olv gry-dk
grn/gry,aren i/p,tr pyr nod,tr calc,
com carb mat,mod hd-sft,com disp,
bkly-sbbkly,com amor.

Bit#6: REED RSX 162
SIZE: 311mm (12.25")
JETS: 3x20,3x18
IN: 3191m OUT:3271m
RUN:80m HRS:7.19
COND:1-7-WT-N-X-I-BT-PR

Survey @ 3206.2m: 24.51° 132.8Az

SANDSTONE:trnsi-clr,tr off wh,
med-f,com crs-v crs,v pr srt,ang-
sbrnd,tr kaol mt,x,tr-r carb spks,
mnr pyr nod,lse,gd inf por,no fluor.

SILTSTONE:dk grn/gry-grn/gry,
tr-r carb spk,mnr pyr nod,sft-frm,
tr mod hd,bkly-fiss.



SANDSTONE:trnsi-clr,vf-f,
 tr crs,mod srt,ang-sbrnd,tr mod sil
 cmt aggs,tr carb spks,mnr pyr nod,lse,
 tr md hd,fr inf por,no fluor.

SILTSTONE:dk grn/gry-lt gry,
 tr carb spks,mnr pyr nod,sft-frn,
 tr mod hd,blky-fiss.

Survey @ 3234.5m: 24.56° 132.5Az

SANDSTONE:trnsi-clr,vf-med,
 com crs,mod srt,ang-sbrnd,tr carb spks,
 mnr pyr nod,lse,fr inf por,no fluor.

SILTSTONE:grn/gry-lt gry,tr grn/
 grn/blk,tr carb spks,tr pyr nod,
 disp-frn,tr mod hd,amor-blky,tr
 fiss.

SANDSTONE:trnsi-clr,f-med,
 com crs,tr vf,tr v crs,v pr srt,
 ang-sbang,tr sbrnd,com mod hd pyr
 cmt,tr wk sil cmt,com pyr nod,tr
 carb spks,lse-fri,gd inf por,
 no fluor.

SANDSTONE:trnsi-clr,f-med,tr
 crs,mod srt,sbang-sbrnd,mnr mod
 hd sil cmt,tr-rr mod hd pyr cmt,tr
 carb spks,tr pyr nod,lse,tr mod hd
 aggs,gd-fr inf por,no fluor.

Survey @ 3263.9m: 24.06° 132.8Az

Bit#7: REED RSX 616
 SIZE: 311mm (12.25")
 JETS: 6x20
 IN: 3271m OUT: 3336m
 RUN: 65m HRS: 14.25
 COND: 2-5-CT-T-X-IN-BT-PR

COAL:brn/blk,vit,frm-mod hd,
 blky-sbfiss,conch.

SILTSTONE:lt gry-grn/gry,tr calc,
 tr pyr nod,abdt carb mat,sft-mod hd,
 com disp,blky-sbfiss,com amor.

SANDSTONE:trnsi-clr,tr opq,
 med-f,tr crs,mod srt,ang-sbrnd,tr
 mod hd calc cmt aggs,tr mod hd pyr
 cmt aggs,tr-rr carb spks,tr pyr nod,
 lse,fr inf por,no fluor.

Survey @ 3292.7m: 22.92° 132.7Az

SILTSTONE:med gry-med dk gry,
 brn/gry-brn/blk,arg,tr-com carb
 mat,sft-frn,sbbiky-sbply,com
 amor,occ sbfiss.

SANDSTONE:cl-trnsi,med lt gry-med
 gry aggs,vf-med,mod wl srt,sbang-
 sbrnd,sph-sbph,tr sil & pyr cmt,
 arg & kao mxt,tr chlor,hd-fri agg,
 pred lse,fr-gd inf por,nil-tr fluor.

Survey @ 3321.8m: 21.93° 133.4Az

